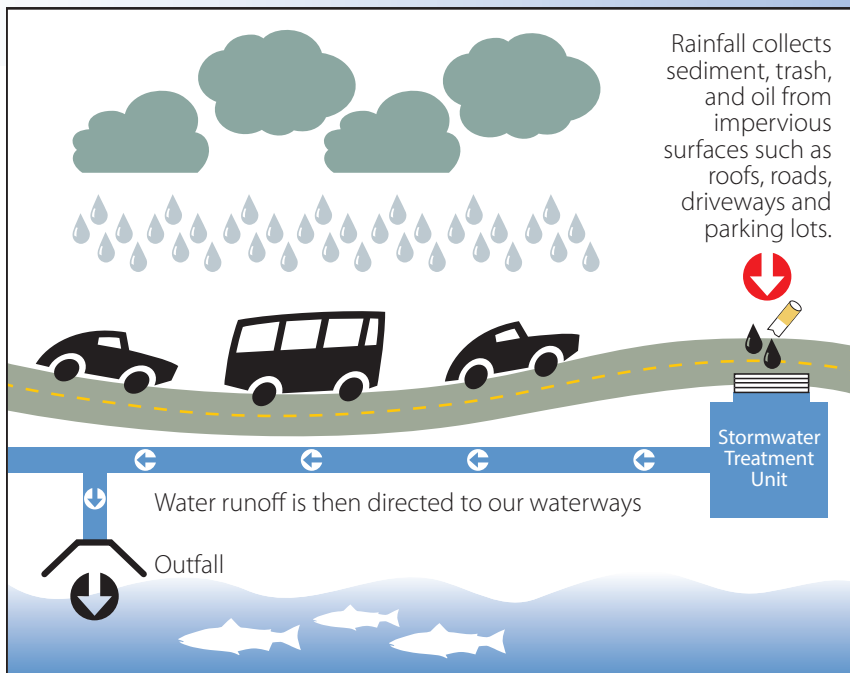


## STORMWATER TREATMENT SYSTEM INSPECTION AND MAINTENANCE



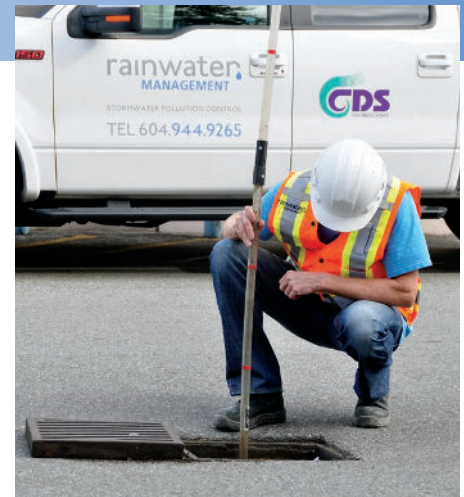
### What you need to know:

- **Stormwater treatment systems have a maximum storage capacity as well as other possible wear and tear that should be monitored.** Systems should be inspected annually, at a minimum. A well maintained system will not pollute downstream and will continue to operate efficiently.
- **If pollution is found to be discharging** from a system not regularly inspected or maintained, the owner is at risk of being fined by the City they are located in.

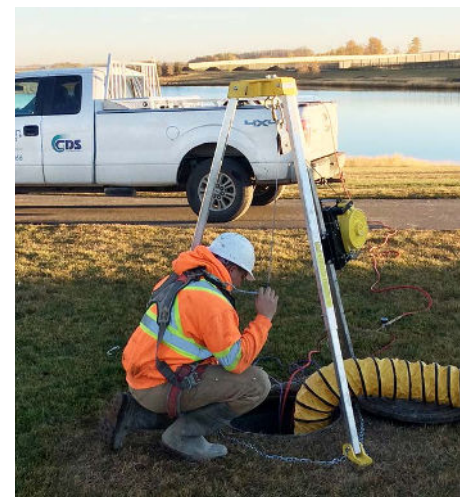
### How we are here to help:

- **Rainwater Management Inspection and Maintenance** services will provide an Inspection Report and if a clean-out is required, we will coordinate a vacuum truck at your convenience to remove sediment, debris and trash.
- **What happens if a repair is recommended?** We will provide a solution at the same time to have your system in satisfactory condition as quickly as possible.
- **Our team is certified in Confined Space Entry.**

\* [Click here for an sample of our Comprehensive Inspection Report](#)



Stormwater System Inspection



Stormwater System Clean Out



CDS Technologies System Collects Trash